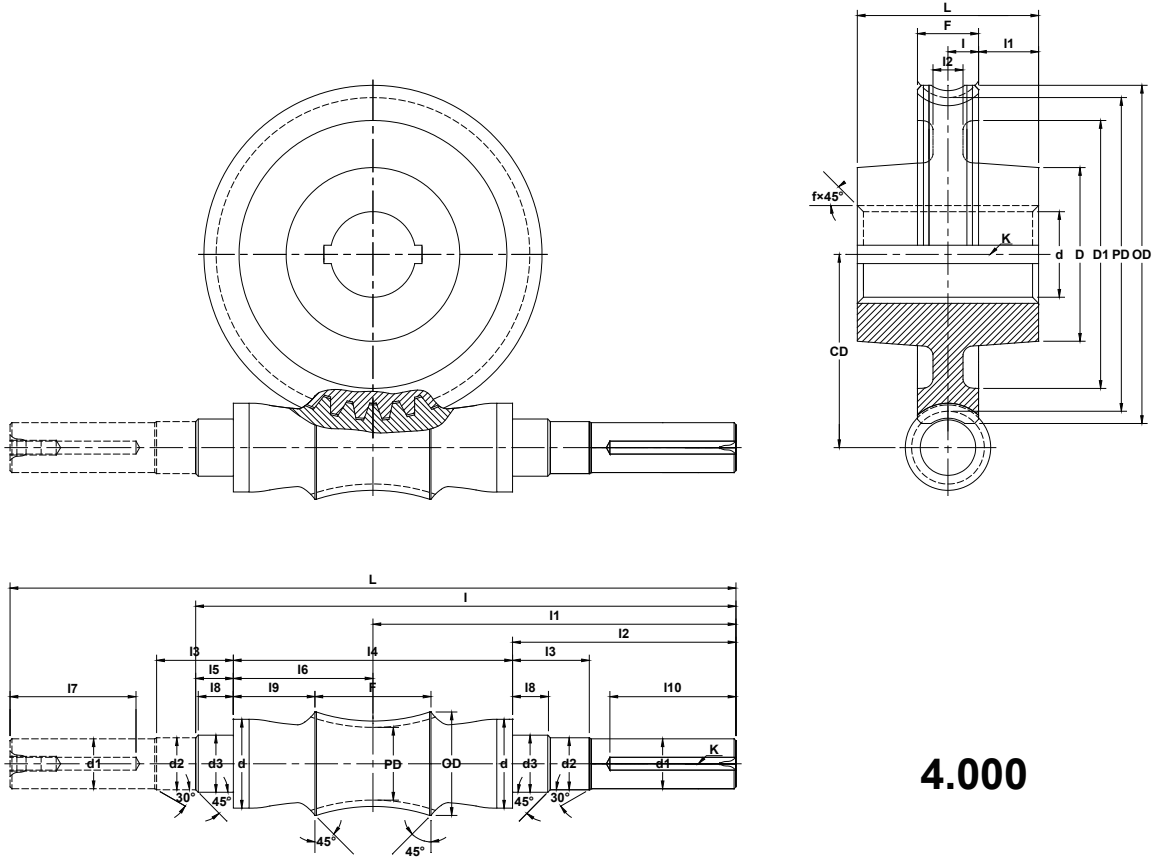




Double Enveloping Worms and Worm Gears

Center Distance: 4.000



4.000

Worm	L	I	F	d	d1 ^{+0.000} _{-0.001}	d2±0.002	d3 ^{+0.000} _{-0.001}	I1	I2	I3	I4±0.002	I5	I6	I7	I8	I9	I10	K
	18.62	13.70	2.50	2.37	1.500	1.5625	1.6270	9.31	6.060	2.34	6.500	1.140	3.250	3.00	1.11	2.00	3.00	3/8×3/16

Worm Gear	L±0.002	I	F	d ^{+0.000} _{-0.001}	D	D1	I1	I2	K	f
	3.625	0.5625	1.125	2.625	4.00	5.50	1.250	0.62	1/2×1/4	0.06

Worm Gear Set		Worm			Worm Gear		
CD	Ratio	THC Gear #	PD	OD	THC Gear #	PD	OD
4.000	5:1	TPW4-5R	1.730	2.400	TPWG4-5R	6.270	6.680
4.000	10:1	TPW4-10R	1.550	2.270	TPWG4-10R	6.450	6.840
4.000	15:1	TPW4-15R	1.550	2.270	TPWG4-15R	6.450	6.840
4.000	20:1	TPW4-20R	1.600	2.270	TPWG4-20R	6.400	6.740
4.000	25:1	TPW4-25R	1.660	2.270	TPWG4-25R	6.340	6.680
4.000	30:1	TPW4-30R	1.550	2.270	TPWG4-30R	6.450	6.840
4.000	40:1	TPW4-40R	1.600	2.270	TPWG4-40R	6.400	6.740
4.000	50:1	TPW4-50R	1.660	2.270	TPWG4-50R	6.340	6.680
4.000	60:1	TPW4-60R	1.690	2.270	TPWG4-60R	6.310	6.620

Note:
 1 All dimensions are in inches.
 2 Dimensions and other engineering data are subject to change. Certified specifications are available on request.