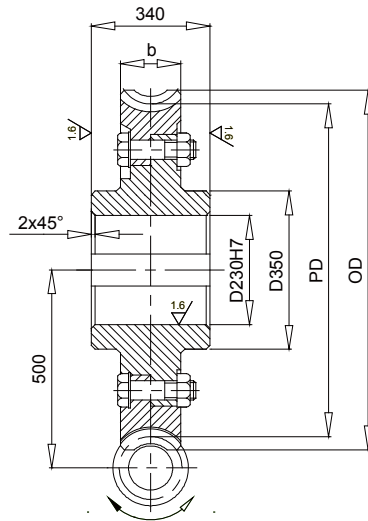
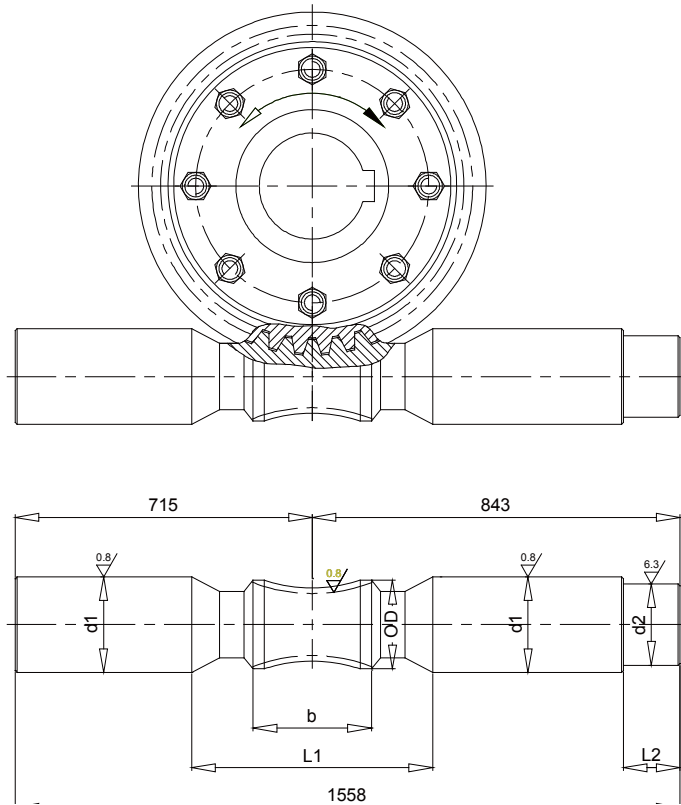


500



Ratio	Worms										Worm Gears					
	THC Gear #	Module	No. of Stars	OD	b	L1	L2	d1	d2	Weight (kg)	THC Gear #	No. of Teeth	PD	OD	b	Weight (kg)
10	STPW17.5-4RNG	17.50	4	252.88	227	380	210	165	155	226.0	BTPWG17.5-40R	40	700.0	742.0	145	399.0
12.5	STPW14.3-4RNG	14.30	4	234.43	228	380	250	165	155	228.0	BTPWG14.3-50R	50	715.0	750.0	140	398.0
16	STPW15-3RNG	15.00	3	229.04	226	380	280	160	150	210.0	BTPWG15-48R	48	720.0	756.0	135	386.0
20	STPW18.25-2RNG	18.25	2	218.06	232	380	300	165	155	225.0	BTPWG18.25-40R	40	730.0	760.0	130	400.0
25	STPW14.7-2RNG	14.70	2	215.92	235	380	310	160	150	209.0	BTPWG14.7-50R	50	735.0	771.0	120	388.0
31.5	STPW11.83-2RNG	11.83	2	199.55	223	380	330	155	145	194.0	BTPWG11.83-63R	63	745.0	775.0	118	377.0
40	STPW9.44-1RNG	9.44	1	188.57	228	380	330	165	155	226.0	BTPWG9.44-80R	80	755.0	778.0	112	400.0
50	STPW15.2-1RNG	15.20	1	192.96	244	380	350	160	150	209.0	BTPWG15.2-50R	50	760.0	797.0	100	387.0
63	STPW12.14-1RNG	12.14	1	179.79	226	380	360	155	145	194.0	BTPWG12.14-63R	63	765.0	795.0	100	378.0
10	STPW19.5-4RNG	19.50	4	278.36	253	410	300	175	159	281.0	BTPWG19.5-40R	40	780.0	827.0	160	558.0
12.5	STPW15.9-4RNG	15.90	4	258.65	249	410	320	175	159	284.0	BTPWG15.9-50R	50	795.0	834.0	155	558.0
16	STPW16.67-3RNG	16.67	3	258.18	263	410	350	170	159	265.0	BTPWG16.67-48R	48	800.0	840.0	150	549.0
20	STPW20.38-2RNG	20.38	2	237.97	257	410	360	175	159	283.0	BTPWG20.38-40R	40	815.0	848.0	140	558.0
25	STPW16.4-2RNG	16.40	2	236.87	263	410	390	170	159	264.0	BTPWG16.4-50R	50	820.0	860.0	130	548.0
31.5	STPW13.17-2RNG	13.17	2	218.83	246	410	400	165	155	246.0	BTPWG13.17-63R	63	830.0	862.0	128	537.0
40	STPW10.5-2RNG	10.50	2	199.24	235	410	400	175	159	281.0	BTPWG10.5-80R	80	840.0	866.0	120	559.0
50	STPW16.9-1RNG	16.90	1	213.90	271	410	420	170	159	264.0	BTPWG16.9-50R	50	845.0	886.0	110	550.0
63	STPW13.49-1RNG	13.49	1	198.53	246	410	440	165	155	247.0	BTPWG13.49-63R	63	850.0	883.0	110	538.0

1 All dimensions are in mm.

2 Dimensions and other engineering data are subject to change. Certified specifications are available on request.



Specifications			
Item	Worm	Worm Gear	Worm Gear Hub
Hand of Helix	Right	Right	-
Material	42CrMo or 38CrMoAl	ZCuSn10Pb1	C45
Heat Treatment	Quenching and Tempering	-	Quenching and tempering
Tooth Surface Treatment	Nitriding	-	-
Tooth Surface Finish	Ground	Cut	-
Tooth Hardness	HRC55-60	HBW885	HB240-270
Precision Grade	GB 7	GB 7	-

Rated Power and Torques of Worms and Worm Sets

Ratio	n <sub>1</sub>	n <sub>2</sub>	P <sub>1N</sub>	T <sub>2N</sub>	η
	rpm	rpm	KW	N.m	%
10	1500	150	448	27097	95
	1000	100	413	37469	95
	750	75	348	41653	94
	500	50	280	49202	92
12.5	1500	120	392	29481	94.5
	1000	80	351	39596	94.5
	750	60	288	42631	93
	500	40	220	47798	91
16	1500	94	332	31452	93
	1000	63	301	42773	93
	750	47	243	45547	92
	500	31	188	51133	89
20	1500	75	280	32445	91
	1000	50	241	41888	91
	750	38	199	45611	90
	500	25	154	51180	87
25	1500	60	230	32581	89
	1000	40	196	41648	89
	750	30	167	46782	88
	500	20	126	51140	85
31.5	1500	48	186	31707	85
	1000	32	162	41424	85
	750	24	120	40431	84
	500	16	105	49907	79
40	1500	38	152	31355	81
	1000	25	126	38987	81
	750	19	110	44821	80
	500	13	81.1	47090	76
50	1500	30	123	30541	78
	1000	20	107	39852	78
	750	15	88.9	43582	77
	500	10	68	47406	73
63	1500	24	99.4	29902	75
	1000	16	88.9	40115	75
	750	12	81.1	48143	74
	500	8	54.9	46243	70

Note:  
 1 All dimensions are in mm.  
 2 Dimensions and other engineering data are subject to change. Certified specifications are available on request.