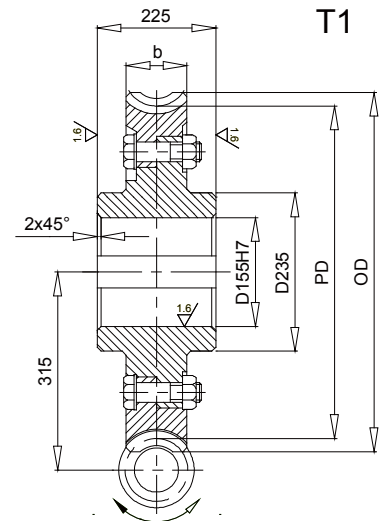
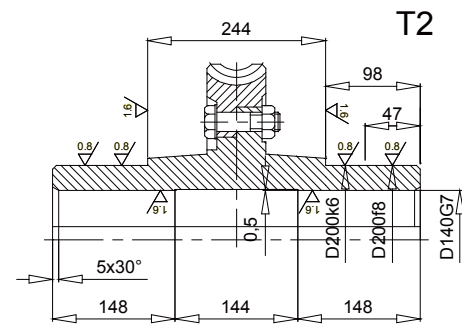


315



T1



T2

| Ratio | Worms | | | | | | | Worm Gears | | | | | | |
|-------|----------------|--------|--------------|--------|---|-----|-------------|----------------|--------------|-----|-----|----|---------------|---------------|
| | THC Gear # | Module | No. of Stars | OD | d | b | Weight (kg) | THC Gear # | No. of Teeth | PD | OD | b | Weight T1(kg) | Weight T2(kg) |
| 10 | STPW12.5-4RNG | 12.50 | 4 | 165.01 | - | 163 | 50.0 | BTPWG12.5-40R | 40 | 500 | 530 | 95 | 126.0 | 152.0 |
| 12.5 | STPW10-4RNG | 10.00 | 4 | 161.91 | - | 160 | 50.0 | BTPWG10-50R | 50 | 500 | 524 | 98 | 126.0 | 152.0 |
| 16 | STPW10.63-3RNG | 10.63 | 3 | 154.60 | - | 169 | 48.0 | BTPWG10.63-48R | 48 | 510 | 536 | 88 | 126.0 | 152.0 |
| 20 | STPW12.75-2RNG | 12.75 | 2 | 155.70 | - | 165 | 51.0 | BTPWG12.75-40R | 40 | 510 | 541 | 85 | 126.0 | 152.0 |
| 25 | STPW10.4-2RNG | 10.40 | 2 | 143.39 | - | 166 | 48.0 | BTPWG10.4-50R | 50 | 520 | 546 | 80 | 127.0 | 153.0 |
| 31.5 | STPW8.41-2RNG | 8.41 | 2 | 129.68 | - | 160 | 48.0 | B1TPWG8.41-63R | 63 | 530 | 550 | 75 | 124.0 | 150.0 |
| 40 | STPW13.2-1RNG | 13.20 | 1 | 139.17 | - | 172 | 51.0 | B1TPWG13.2-40R | 40 | 528 | 560 | 70 | 125.0 | 151.0 |
| 50 | STPW10.6-1RNG | 10.60 | 1 | 134.39 | - | 171 | 48.0 | B1TPWG10.6-50R | 50 | 530 | 556 | 70 | 127.0 | 153.0 |
| 63 | STPW8.49-1RNG | 8.49 | 1 | 125.13 | - | 162 | 48.0 | B1TPWG8.49-63R | 63 | 535 | 556 | 70 | 124.0 | 150.0 |

Note:
 1 All dimensions are in mm.
 2 Dimensions and other engineering data are subject to change. Certified specifications are available on request.



| Specifications | | | |
|-------------------------|-------------------------|------------|-------------------------|
| Item | Worm | Worm Gear | Worm Gear Hub |
| Hand of Helix | Right | Right | - |
| Material | 42CrMo or 38CrMoAl | ZCuSn10Pb1 | C45 |
| Heat Treatment | Quenching and Tempering | - | Quenching and tempering |
| Tooth Surface Treatment | Nitriding | - | - |
| Tooth Surface Finish | Ground | Cut | - |
| Tooth Hardness | HRC55-60 | HBW885 | HB240-270 |
| Precision Grade | GB 7 | GB 7 | - |

Rated Power and Torques of Worms and Worm Sets

| Ratio | n ₁ | n ₂ | P _{1N} | T _{2N} | η |
|-------|----------------|----------------|-----------------|-----------------|------|
| | rpm | rpm | KW | N.m | % |
| 10 | 1500 | 150 | 183 | 11068 | 95 |
| | 1000 | 100 | 169 | 15333 | 95 |
| | 750 | 75 | 143 | 17116 | 94 |
| | 500 | 50 | 115 | 20208 | 92 |
| 12.5 | 1500 | 120 | 161 | 12108 | 94.5 |
| | 1000 | 80 | 144 | 16245 | 94.5 |
| | 750 | 60 | 118 | 17467 | 93 |
| | 500 | 40 | 90 | 19554 | 91 |
| 16 | 1500 | 94 | 136 | 12884 | 93 |
| | 1000 | 63 | 123 | 17479 | 93 |
| | 750 | 47 | 99.7 | 18687 | 92 |
| | 500 | 31 | 77.2 | 20997 | 89 |
| 20 | 1500 | 75 | 115 | 13325 | 91 |
| | 1000 | 50 | 98.6 | 17138 | 91 |
| | 750 | 38 | 81.5 | 18680 | 90 |
| | 500 | 25 | 63.2 | 21004 | 87 |
| 25 | 1500 | 60 | 94.3 | 13358 | 89 |
| | 1000 | 40 | 80.4 | 17084 | 89 |
| | 750 | 30 | 68.6 | 19217 | 88 |
| | 500 | 20 | 51.5 | 20903 | 85 |
| 31.5 | 1500 | 48 | 66.5 | 11336 | 85 |
| | 1000 | 32 | 60 | 15342 | 85 |
| | 750 | 24 | 51.5 | 17352 | 84 |
| | 500 | 16 | 40.7 | 19345 | 79 |
| 40 | 1500 | 38 | 62.2 | 12831 | 81 |
| | 1000 | 25 | 51.5 | 15935 | 81 |
| | 750 | 19 | 45 | 18336 | 80 |
| | 500 | 13 | 33.2 | 19277 | 76 |
| 50 | 1500 | 30 | 50.4 | 12514 | 78 |
| | 1000 | 20 | 43.9 | 16351 | 78 |
| | 750 | 15 | 36.4 | 17844 | 77 |
| | 500 | 10 | 27.9 | 19450 | 73 |
| 63 | 1500 | 24 | 40.7 | 12244 | 75 |
| | 1000 | 16 | 36.4 | 16425 | 75 |
| | 750 | 12 | 33.2 | 19708 | 74 |
| | 500 | 8 | 22.5 | 18952 | 70 |

Note:
 1 All dimensions are in mm.
 2 Dimensions and other engineering data are subject to change. Certified specifications are available on request.