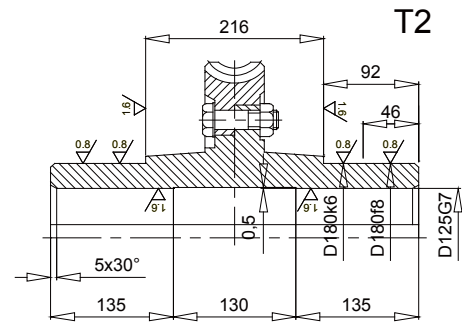
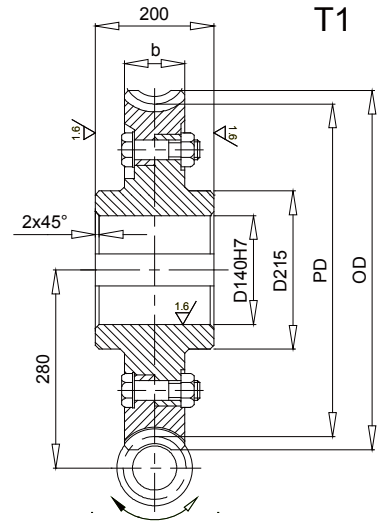


280



Ratio	Worms							Worm Gears						
	THC Gear #	Module	No. of Stars	OD	d	b	Weight (kg)	THC Gear #	No. of Teeth	PD	OD	b	Weight T1(kg)	Weight T2(kg)
10	STPW10.88-4RNG	10.88	4	155.15	-	141	37.0	BTPWG10.88-40R	40	435	461	90	88.0	112.0
12.5	STPW8.8-4RNG	8.80	4	148.02	-	141	36.0	BTPWG8.8-50R	50	440	461	90	89.0	113.0
16	STPW9.27-3RNG	9.27	3	144.57	-	146	37.0	BTPWG9.27-48R	48	445	468	85	89.0	113.0
20	STPW11.25-2RNG	11.25	2	141.24	-	146	36.0	BTPWG11.25-40R	40	450	477	80	89.0	113.0
25	STPW9.1-2RNG	9.10	2	133.48	-	144	35.0	BTPWG9.1-50R	50	455	477	78	88.0	112.0
31.5	STPW7.3-2RNG	7.30	2	125.72	-	140	37.0	BTPWG7.3-63R	63	460	478	75	89.0	113.0
40	STPW11.63-1RNG	11.63	1	127.32	-	151	36.0	BTPWG11.63-40R	40	465	493	65	89.0	113.0
50	STPW9.4-1RNG	9.40	1	119.45	-	148	35.0	BTPWG9.4-50R	50	470	493	65	88.0	112.0
63	STPW7.54-1RNG	7.54	1	111.61	-	145	35.0	BTPWG7.54-63R	63	475	494	65	90.0	114.0

Note:
 1 All dimensions are in mm.
 2 Dimensions and other engineering data are subject to change. Certified specifications are available on request.



Specifications			
Item	Worm	Worm Gear	Worm Gear Hub
Hand of Helix	Right	Right	-
Material	42CrMo or 38CrMoAl	ZCuSn10Pb1	C45
Heat Treatment	Quenching and Tempering	-	Quenching and tempering
Tooth Surface Treatment	Nitriding	-	-
Tooth Surface Finish	Ground	Cut	-
Tooth Hardness	HRC55-60	HBW885	HB240-270
Precision Grade	GB 7	GB 7	-

Rated Power and Torques of Worms and Worm Sets

Ratio	n ₁	n ₂	P _{1N}	T _{2N}	η
	rpm	rpm	KW	N.m	%
10	1500	150	138	8347	95
	1000	100	127	11522	95
	750	75	107	12807	94
	500	50	86.3	15165	92
12.5	1500	120	121	9100	94.5
	1000	80	108	12183	94.5
	750	60	88.7	13130	93
	500	40	67.8	14730	91
16	1500	94	102	9663	93
	1000	63	92.8	13187	93
	750	47	75	14058	92
	500	31	58.1	15802	89
20	1500	75	86.3	10000	91
	1000	50	74.2	12897	91
	750	38	61.3	14050	90
	500	25	47.6	15819	87
25	1500	60	71	10058	89
	1000	40	60.5	12855	89
	750	30	51.6	14455	88
	500	20	38.7	15707	85
31.5	1500	48	57.3	9768	85
	1000	32	50	12785	85
	750	24	37.1	12500	84
	500	16	32.3	15352	79
40	1500	38	46.8	9654	81
	1000	25	38.7	11975	81
	750	19	33.9	13813	80
	500	13	25	14516	76
50	1500	30	37.9	9411	78
	1000	20	33.1	12328	78
	750	15	27.4	13432	77
	500	10	21	14640	73
63	1500	24	30.7	9235	75
	1000	16	27.4	12364	75
	750	12	25	14841	74
	500	8	16.9	14235	70

Note:
 1 All dimensions are in mm.
 2 Dimensions and other engineering data are subject to change. Certified specifications are available on request.