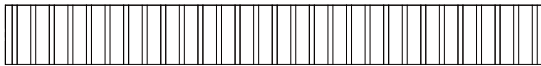
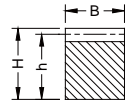
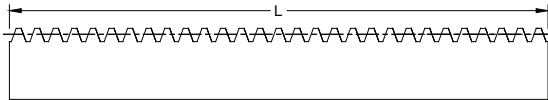


Specifications	
Pressure Angle	20°
Material	C45
Heat Treatment	-
Tooth Surface Treatment	-
Tooth Surface Finish	Milled
Precision Grade	ISO 8

Rack #	Module	L	B	H	h
SR1-030	1	300	10.0	10	9
SR1-050	1	500	10.0	10	9
SR1-100	1	1021	10.0	15	14

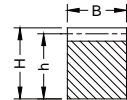
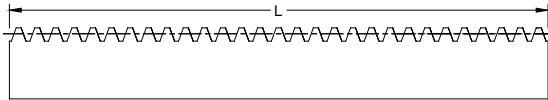
Note: Dimensions(in millimeters unless otherwise indicated) and other engineering data are subject to change. Certified specifications are available on request.



Specifications	
Pressure Angle	20°
Material	SS303
Heat Treatment	-
Tooth Surface Treatment	-
Tooth Surface Finish	Milled
Precision Grade	ISO 8

Rack #	Module	L	B	H	h
SSR0.5-020-3	0.5	200	3.0	10	9.5
SSR0.5-030-4.8	0.5	300	4.8	9.5	9
SSR0.5-020-8	0.5	200	8.0	8	7.5
SSR0.5-050-8	0.5	505	8.0	10	9.5
SSR0.75-020-3	0.75	200	3.0	10	9.25
SSR0.75-020-8	0.75	200	8.0	8	7.25
SSR0.75-050-8	0.75	505	8.0	10	9.25
SSR0.8-050-5	0.8	505	5.0	10	9.2
SSR0.8-020-7	0.8	200	7.0	7	6.2
SSR0.8-050-7	0.8	505	7.0	10	9.2
SSR1-050-8	1	500	8.0	10	9
SSR1-030-10	1	300	10.0	10	9
SSR1-050-10	1	500	10.0	10	9

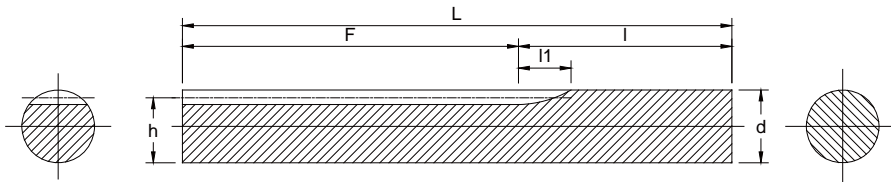
Note: Dimensions (in millimeters unless otherwise indicated) and other engineering data are subject to change. Certified specifications are available on request.



Specifications	
Pressure Angle	20°
Material	Brass
Heat Treatment	-
Tooth Surface Treatment	-
Tooth Surface Finish	Milled
Precision Grade	ISO 8

Rack #	Module	L	B	H	h
BR0.3-020-3	0.3	200	3.0	8	7.7
BR0.5-020-3	0.5	200	3.0	8	7.5
BR0.5-020-8	0.5	200	8.0	8	7.5
BR0.5-050-8	0.5	505	8.0	10	9.5
BR0.75-020-3	0.75	200	3.0	8	7.25
BR0.75-050-3	0.75	505	3.0	10	9.25
BR0.75-020-8	0.75	200	8.0	8	7.25
BR0.75-050-8	0.75	505	8.0	10	9.25
BR0.8-050-5	0.8	505	5.0	10	9.2
BR0.8-020-7	0.8	200	7.0	7	6.2
BR0.8-050-7	0.8	505	7.0	10	9.2

Note: Dimensions (in millimeters unless otherwise indicated) and other engineering data are subject to change. Certified specifications are available on request.



Specifications	
Pressure Angle	20°
Material	SS304
Heat Treatment	-
Tooth Surface Treatment	-
Tooth Surface Finish	Milled
Precision Grade	ISO 9

Rack #	Module	L	d_{h7} -0.015	h	F	l	l1
SSRR0.5-202	0.5	202	8	7.5	149	53	10.7
SSRR0.75-202	0.75	202	8	7.25	148	54	13
SSRR0.8-202	0.8	202	8	7.2	148	54	13.4
SSRR1-205	1	205	10	9.0	238	67	15

Note: Dimensions (in millimeters unless otherwise indicated) and other engineering data are subject to change. Certified specifications are available on request.