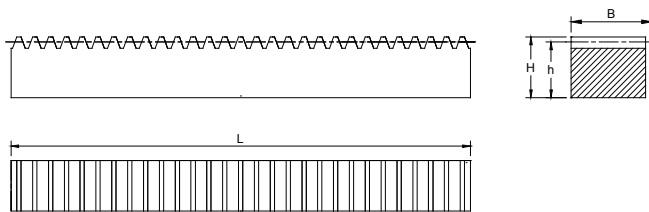




Steel DP Racks



Specifications	
Pressure Angle	20°
Material	C45
Heat Treatment	-
Tooth Surface Treatment	-
Tooth Surface Finish	Milled
Precision Grade	Commercial
Ends Not Machined	

Racks #	DP	Pitch	L	B	H	h	Weight (Lbs)
SRDP4-24W	4	0.785	24	3.500	2.000	1.750	41.00
SRDP4-48W	4	0.785	48	3.500	2.000	1.750	82.00
SRDP4-72W	4	0.785	72	3.500	2.000	1.750	123.00
SRDP5-24W	5	0.628	24	3.500	1.500	1.300	22.40
SRDP5-48W	5	0.628	48	3.500	1.500	1.300	44.80
SRDP5-72W	5	0.628	72	3.500	1.500	1.300	67.20
SRDP6-24W	6	0.524	24	2.000	1.500	1.333	17.00
SRDP6-48W	6	0.524	48	2.000	1.500	1.333	34.00
SRDP6-72W	6	0.524	72	2.000	1.500	1.333	51.00
SRDP8-24W	8	0.393	24	1.500	1.500	1.375	13.80
SRDP8-48W	8	0.393	48	1.500	1.500	1.375	27.60
SRDP8-72W	8	0.393	72	1.500	1.500	1.375	41.30
SRDP10-24W	10	0.314	24	1.250	1.250	1.150	9.00
SRDP10-48W	10	0.314	48	1.250	1.250	1.150	18.00
SRDP10-72W	10	0.314	72	1.250	1.250	1.150	27.00
SRDP12-24W	12	0.262	24	1.000	1.000	0.917	6.40
SRDP12-48W	12	0.262	48	1.000	1.000	0.917	12.80
SRDP12-72W	12	0.262	72	1.000	1.000	0.917	19.20
SRDP16-24W	16	0.196	24	0.750	0.750	0.688	3.40
SRDP16-48W	16	0.196	48	0.750	0.750	0.688	6.80
SRDP16-72W	16	0.196	72	0.750	0.750	0.688	10.20
SRDP20-24W	20	0.157	24	0.500	0.500	0.450	0.80
SRDP20-48W	20	0.157	48	0.500	0.500	0.450	1.60
SRDP20-72W	20	0.157	72	0.500	0.500	0.450	2.50

Note: Dimensions(in inches unless otherwise indicated) and other engineering data are subject to change. Certified specifications are available on request.